

	PETROL 95 ULP	PETROL 93 ULP & LRP	DIESEL 0.05%	DIESEL 0.005%	ILL. PAR.
GAUTENG PUMP PRICE (SA c/l) AS FROM 03/06/2020	1,340.000	1,320.000	-	-	-
WHOLESALE PRICE (SA c/l) AS FROM 03/06/2020	-	-	1,130.560	1,138.960	489.828
SINGLE NATIONAL MAXIMUM RETAIL PRICE	-	-	-	-	597.000
BASIC FUEL PRICE - 11/06/2020 (SA c/l)	524.936	506.936	534.417	538.111	481.913
PRESS RELEASE CONTRIBUTION TO BFP 03/06/2020 - 11/06/2020 (SA c/l)	392.770	382.770	379.630	388.030	285.128
UNIT OVER/(UNDER) RECOVERY - 11/06/2020 (SA c/l)	(132.166)	(124.166)	(154.787)	(150.081)	(196.785)
AVERAGE BASIC FUEL PRICE 29/05/2020 - 11/06/2020	518.971	498.722	520.234	524.628	466.696
AVERAGE UNIT OVER/(UNDER) RECOVERY 29/05/2020 - 11/06/2020	(161.601)	(151.352)	(147.204)	(142.898)	(193.568)

ANALYSIS MOVEMENT OF AVERAGE OVER/(UNDER) RECOVERY

- MOVEMENT IN INTERNATIONAL PRODUCT PRICES

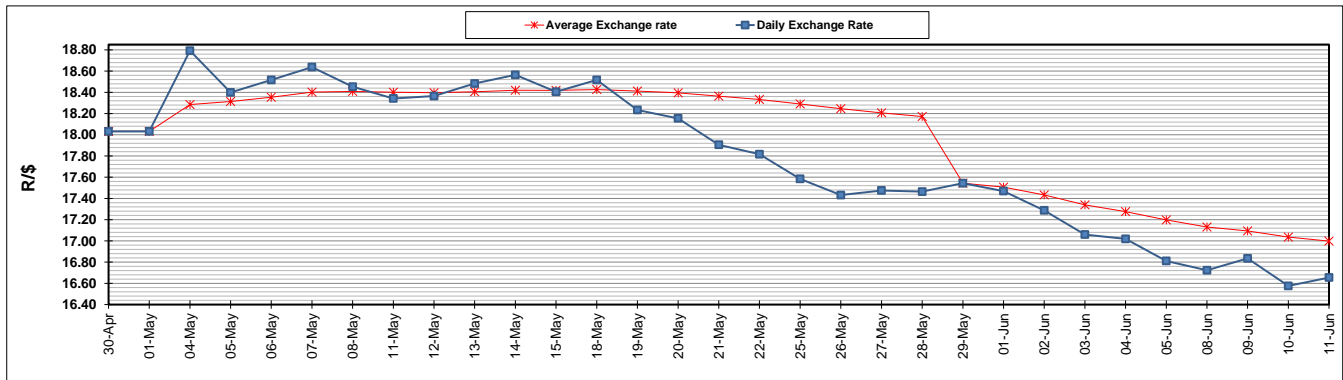
- MOVEMENT IN EXCHANGE RATE

AVERAGE UNIT OVER/(UNDER) RECOVERY 29/05/2020 - 11/06/2020

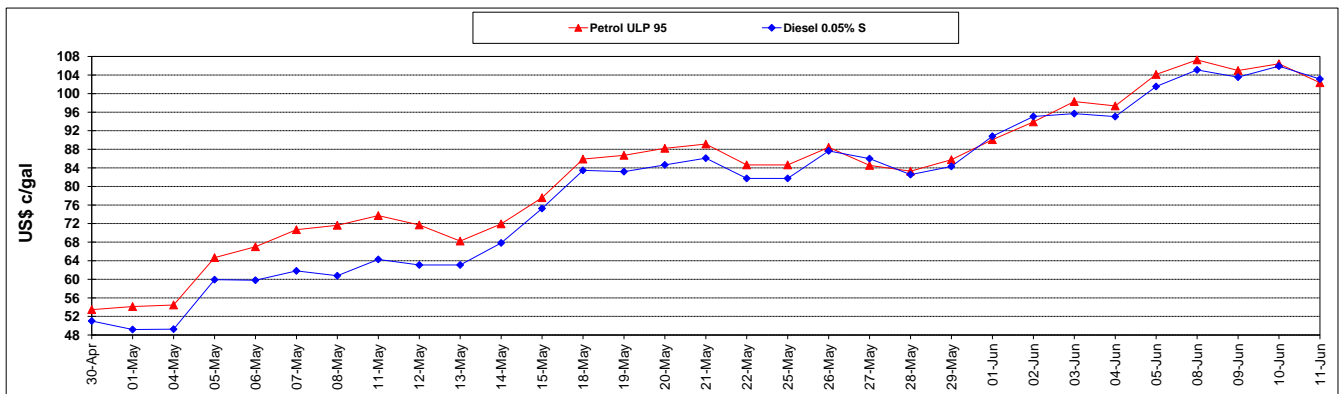
	PETROL 95	PETROL 93	DIESEL 0.05%	DIESEL 0.005%	ILL. PAR.
- MOVEMENT IN INTERNATIONAL PRODUCT PRICES	(197.436)	(185.789)	(183.126)	(179.124)	(225.793)
- MOVEMENT IN EXCHANGE RATE	35.835	34.437	35.922	36.226	32.225
AVERAGE UNIT OVER/(UNDER) RECOVERY 29/05/2020 - 11/06/2020	(161.601)	(151.352)	(147.204)	(142.898)	(193.568)

R/\$ EXCHANGE RATE - (R/\$16.6547 - 11/06/2020)

EXCHANGE RATE USED IN BASIC FUEL PRICE



INTERNATIONAL PRODUCT PRICES OF BASKET USED IN BASIC FUEL PRICE



BASIC FUEL PRICE IN SA CENTS PER LITRE

